



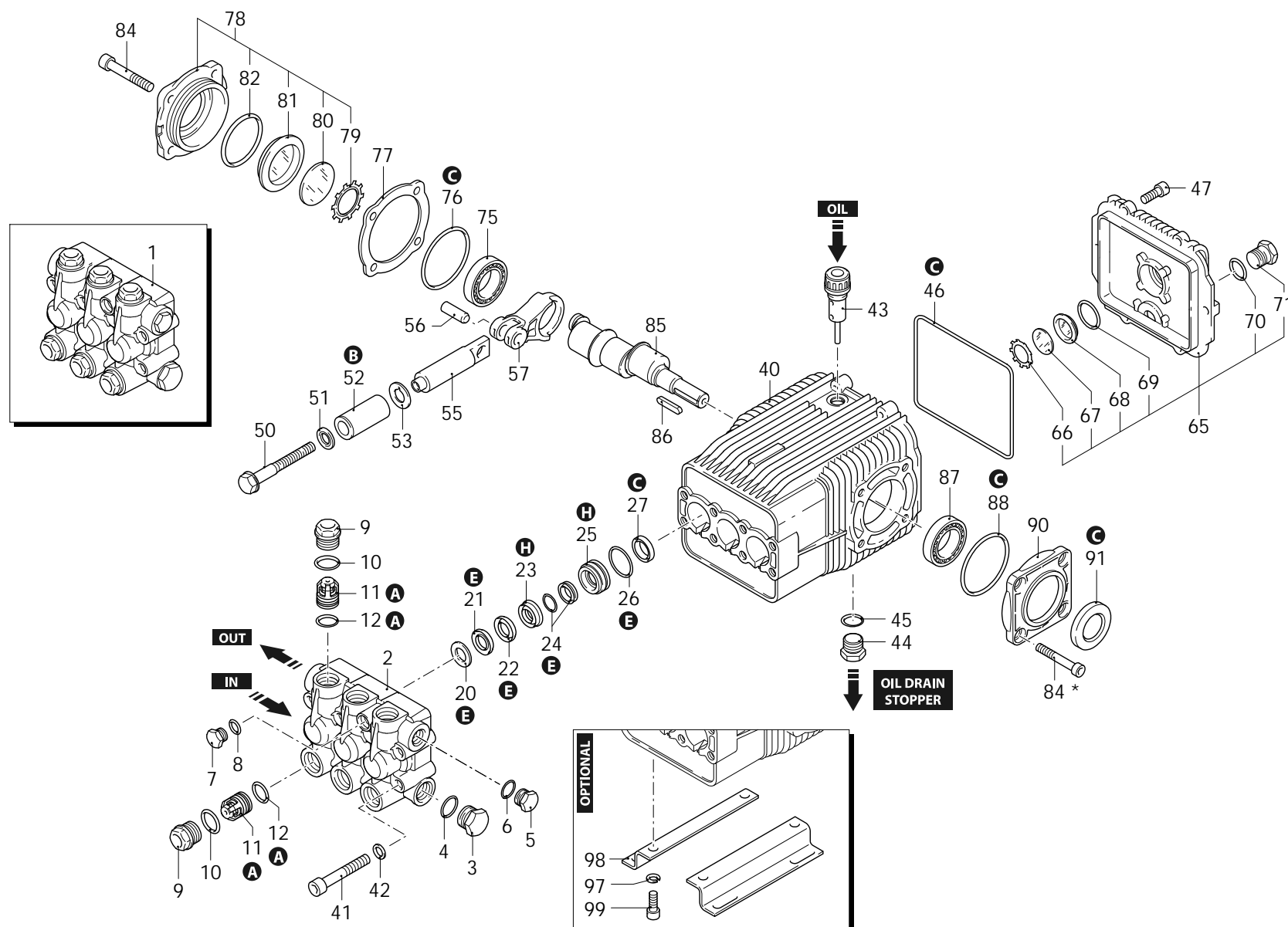
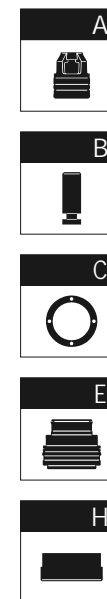
Series 298

RW

N

1450rpm

ø 24mm



AR\_s298-01\_v01

29/09/2023



Series 298

RW

N

1450rpm

ø 24mm

P	Code	Description	Q	Note	Validity	P	Code	Description	Q	Note	Validity
1	2989201	Head assembly	Ø 18 nickel plated	1		68	1260250	Level gauge	1		
2	2980110	Head	nickel plated	1		69	1140450	O-ring	Ø 20,24x2,62	1	Lubricate with grease Molykote PG54
3	960870	Plug	1/2" G nickel	1	Screw with Loxeal 55-14 / C=30Nm	70	740290	O-ring	Ø 14x1,78	1	Lubricate with grease Molykote PG54
4	180101	O-ring	Ø 17,5x2	1	Lubricate with grease Molykote PG54	71	1980740	Plug	3/8" G brass	1	C=20Nm
5	1981180	Plug	3/8" G nickel	1	Screw with Loxeal 55-14 / C=20Nm	75	1140420	Bearing		1	
6	740290	O-ring	Ø 14x1,78	1	Lubricate with grease Molykote PG54	76	1941380	O-ring	Ø 66,34x2,62	1	
7	1380690	Plug	1/4" G nickel	1	Screw with Loxeal 55-14 / C=15Nm	77	1941390	Shim 0.05mm		1	
8	820510	O-ring	Ø 10,82x1,78	1		77	1941400	Shim 0.10mm		1	
9	1380740	Plug	nickel	6	Screw with Loxeal 55-14 / C=54Nm	77	1941410	Shim 0.19mm		1	
10	960160	O-ring	Ø 17,86x2,62	6	Lubricate with grease Molykote PG54	77	1941420	Shim 0.25mm		1	
11	1389051	Complete valve		6		78	1949011	Cover		1	
12	880830	O-ring	Ø 15,54x2,62	6		79	1941290	Ring		1	
20	960110	Ring	support Ø 18	3		80	1941260	Plate		1	
21	1382740	Water seal	Ø 18	3	Lubricate with grease Molykote PG54	81	1941270	Level gauge		1	
22	2340310	Ring	anti-extrusion	3		82	100410	O-ring	Ø 34,6x2,62	1	
23	2980070	Piston guide	front Ø 18	3		84	850370	Screw	TCEI M8x16	4	C=24,5Nm
24	1942690	Water seal		3	Lubricate with grease Molykote PG54	84*	850370	Screw	TCEI M8x16	4	C=24,5Nm
25	1942480	Piston guide	rear Ø 18	3		85	2980030	Shaft	1 marked	1	
26	820490	O-ring	Ø 34,65x1,78	3		86	650250	Key		1	
27	1940560	Ring	seal	3		87	1941370	Bearing		1	
40	1941330	Pump body		1		88	1941380	O-ring	Ø 66,34x2,62	1	
41	2980100	Screw	TCEI M10x70	8	C=53Nm	90	1941240	Support		1	
42	650530	Washer		8		91	820681	Ring	seal	1	Screw with Loxeal 55-14 / C=10Nm
43	1140370	Oil plug	with oil dipstick	1		97	200231	Washer		4	
44	1980740	Plug	3/8" G brass	1	C=20Nm	98	1940370	Foot		2	
45	740290	O-ring	Ø 14x1,78	1	Lubricate with grease Molykote PG54	99	1940380	Screw	TCEI 10x18	4	C=50Nm
46	1940410	O-ring	Ø 132x3	1		A	42169	Valve kit		1	
47	1200430	Screw	TCEI M6x16	6	Screw with Loxeal 55-14 / C=10Nm	B	2872	Piston kit	Ø 18	1	
50	1941640	Screw	TE M6x60	3	Screw with Loxeal 55-14 / C=7Nm	C	42170	Oil seal kit		1	
51	1340600	Washer		3		E	42171	Water seal kit	Ø 18	1	
52	1941020	Piston	Ø 18	3		H	42172	Piston guide kit	Ø 18	1	
53	1383190	Plate		3							
55	1940960	Piston	guide	3							
56	1940060	Pin		3							
57	2980010	Connecting-rod		3	Lubricate with grease Molykote BR2 PLUS						
65	1949010	Cover	complete	1							
66	1260430	Ring		1							
67	1780690	Plate		1							

Revision: 1

Oil type: SAE 15W40

Attachment:

Date: 29/09/2023

Oil quantity: 0,960 Kg

*C= Tightening torque (Tolerance +0 ÷ -10%)**\* = Not present for electric pump*